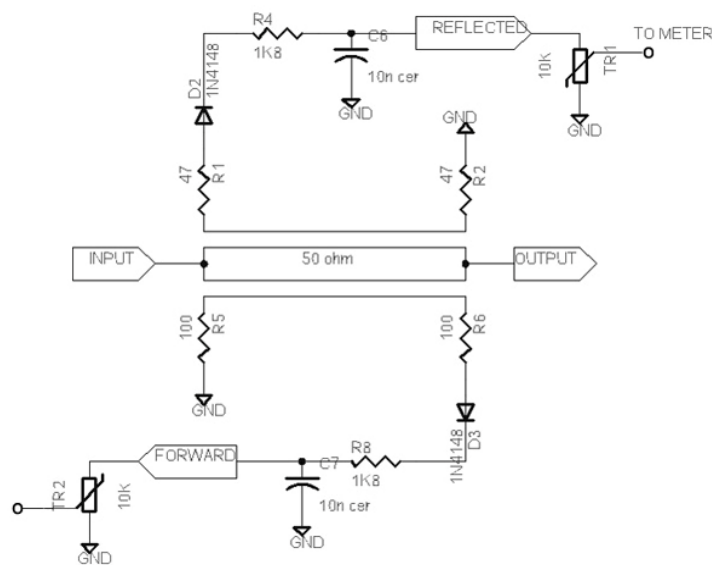
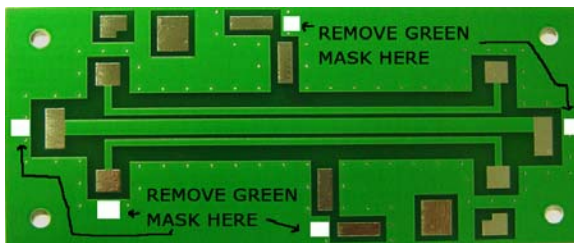


HIGH QUALITY SENSOR-COUPLER BOARD FOR VSWR AND POWER METERS

PC BOARD ONLY, NO PARTS INCLUDED

- COVERS FREQUENCIES FROM 10 MHz - 2500 MHz
- FORWARD/ REFLECTION CIRCUIT BOARD WITH HIGH FREQUENCY HP DIODES
- DETECTS VERY LOW POWER OUTPUT (+5dBm) or LESS DEPENDING ON FREQ.
- EXCELLENT FOR TV TRANSMITTERS, FM TRANSMITTERS OR ANY TRANSMITTING EQUIPMENT UP TO 2.4 GHz
- HANDLES 300 W FOR FM BAND 88-108 MHz
- 50 OHMS IMPEDANCE IN/OUT
- A HARD TO FIND ITEM



DIMENSIONS: 5" X 2.5"

Indicator-meter & parts are not included, only a high quality double-sided pc board (FR-6 high temperature material).

In order to get this sensor working accurately for high frequencies, please remove green mask sharply as shown on the picture to solder surface mount parts. Use only high quality parts: HP diode 1N5712 or similar, high quality caps 10 nF, surface mount resistors 50 ohms 1% or better.